

At last – an endodontic filling material with the familiar

handling of gutta percha **and** the added vital benefits of a superior seal.

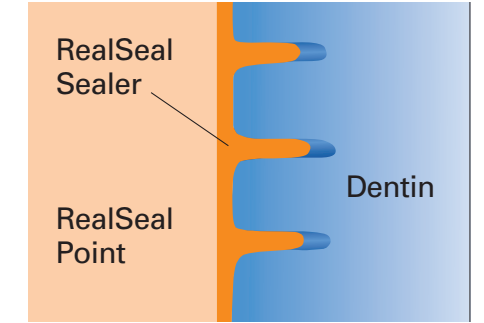
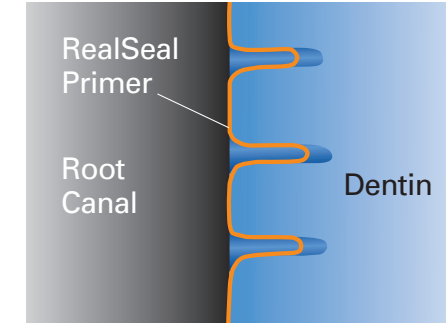
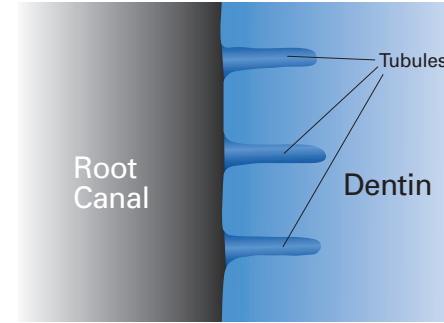
Introducing **RealSeal.**



Why do we call it RealSeal? Because it is the endodontic filling material that provides a REAL seal. And Resilon™, the primary component of RealSeal, has also been proven to be biocompatible, nontoxic and nonmutagenic.¹ RealSeal is:

- **Leak-Resistant.** Unlike gutta percha, RealSeal leaves no gap for leakage. Coronal and apical leakage are substantially reduced.
- **Strengthening.** Gives the root significant toughness.
- **Technique-Compatible.** Works with your current filling method.
- **Retreatable.** With chloroform and/or heat. Like Grossman's formula, retreatments are easy.
- **Radiopaque.** Just like your current method of obturation, detection is not a problem.

¹Loma Linda University Biocompatibility and Toxicology Research Laboratory, Evaluation of Cytotoxicity of Resilon™ and its Extracts Using the Agar Diffusion Method. Conclusion: Resilon™ is not cytotoxic using the agar diffusion method.

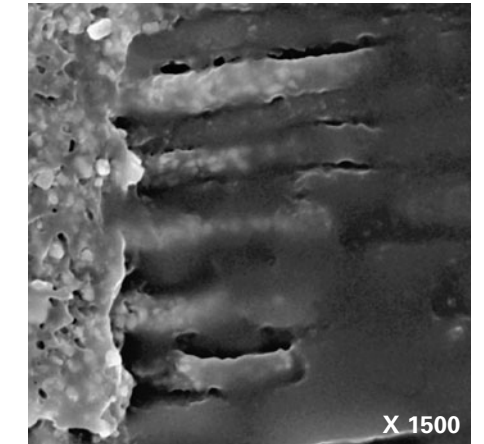


HOW REALSEAL WORKS

Based on polymers of polyester, RealSeal contains bioactive glass, Ca(OH)₂, and radiopaque filler. The RealSeal filling material forms what is called a "mono-block" between the canal wall, sealer, and RealSeal cone. This is what gives you a seamless seal and true root strengthening.

NO LEARNING CURVE

And because RealSeal is applied in the same way as gutta percha, adapting it to your current system is as seamless as the seal it creates. Use the obturation technique of your choice, adding only a priming step before filling.



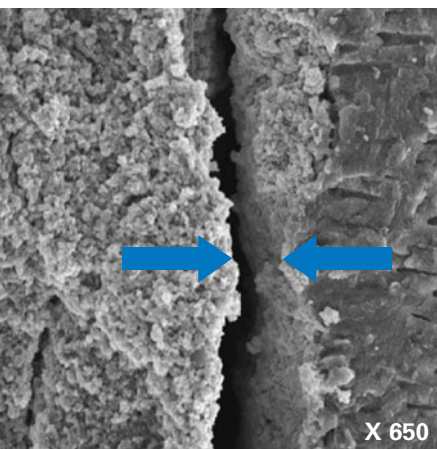
RealSeal resin tags. No other sealer can offer this kind of bonding.

Proven Strengthening

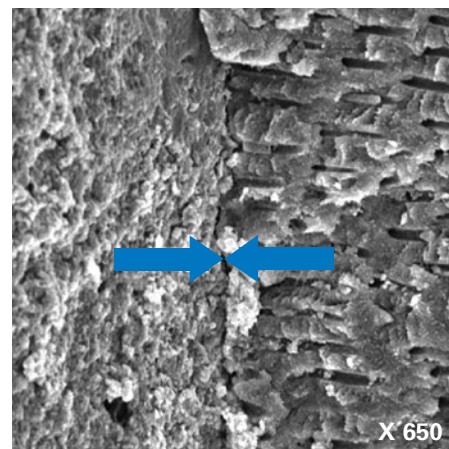
GROUPS	MEAN
Control/No Obturation	465.39
Lateral Gutta Percha	391.51
Vertical Gutta Percha	392.37
Lateral Resilon™	504.22
Vertical Resilon™	498.23

Source: F.B. Teixeira, E.C. Teixeira, J.Y. Thompson, and M. Trope. IADR/AADR/CADR 82nd General Session, March 10-13, 2004.

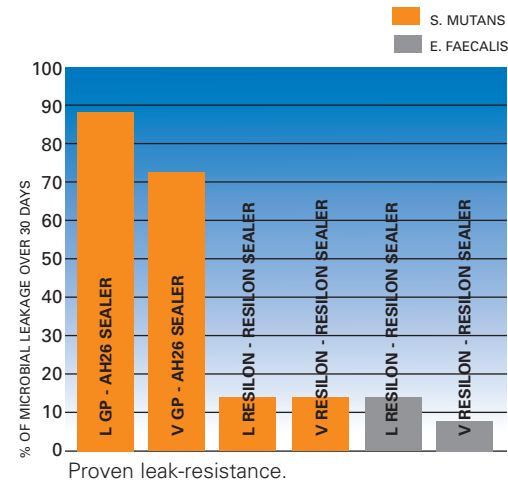
A SUPERIOR SEAL DRAMATICALLY REDUCES LEAKAGE



Traditional gutta percha shows fissures and gaps between its surface and the dentin – just the place for harmful bacteria to multiply.



RealSeal (Resilon™) fills seamlessly and smoothly, eliminating leakage.



Source: G. Shipper, D. Orstavik, F.B. Teixeira, and M. Trope. Journal of Endodontics (in press).

I found this material has excellent handling, working time and flow characteristics, and requires no change in my preferred root filling technique. When using warm vertical condensation methods, RealSeal flows easily into the accessible lateral anatomy of the root canal system.

– Frederic Barnett, DMD
Philadelphia, PA, USA

RealSeal is the real deal! It strengthens the root, seals the canal system and is simple to use. The protocol allows me to incorporate my current obturation technique. The core and sealer "marry" together with the canal walls to provide a true chemical bond.

– Gary Glassman DDS, FRCD(C)
Toronto, ON, Canada





REF #	DESCRIPTION
-------	-------------

RealSeal Kits

972-2100	Intro Kit .04 Taper #15 – #40 (20/per size) .06 Taper #15 – #40 (20/per size) Root Canal Sealant (with 12 mixers) 3 ml Thinning Resin 6 ml Primer Mixing Wells (25) Applicator Brushes (25)
972-2102	.02 Taper Kit .02 Taper #15 – #40 (20/per size) Accessory Points (20/per size) Root Canal Sealant (with 12 mixers) 3 ml Thinning Resin 6 ml Primer Mixing Wells (25) Applicator Brushes (25)
972-2103	.04 Taper Kit .04 Taper #15 – #40 (20/per size) Accessory Points (20/per size) Root Canal Sealant (with 12 mixers) 3 ml Thinning Resin 6 ml Primer Mixing Wells (25) Applicator Brushes (25)
972-2104	.06 Taper Kit .06 Taper #15 – #40 (20/per size) Accessory Points (20/per size) Root Canal Sealant (with 12 mixers) 3 ml Thinning Resin 6 ml Primer Mixing Wells (25) Applicator Brushes (25)

RealSeal Refills

972-2004	Pellets (pk 100)
972-2005	Root Canal Sealant (with 12 mixers)
972-2006	3 ml Thinning Resin
972-2007	6 ml Primer
972-2008	Mixing Wells (25)
972-2009	Applicator Brushes (25)

Accessory Points (6 vials of 20)

972-2301	XF (X-Fine)
972-2302	FF (Fine-Fine)
972-2303	MF (Medium-Fine)
972-2304	F (Fine)
972-2305	FM (Fine-Medium)
972-2306	M (Medium)
972-2307	L (Large)
972-2310	Assorted (XF-FF-MF-F-FM-M)

REF #	DESCRIPTION
-------	-------------

Autofit Points (box of 50)

972-2311	.04 Taper
972-2312	.06 Taper
972-2313	.08 Taper
972-2314	.10 Taper
972-2315	.12 Taper (.98 mm max dia)
972-2316	.12 Taper (1.35 mm max dia)
972-2320	Assorted Pack Taper (.06 – .12 Taper)

.02 Taper Points (box of 100)

972-2220	Size #20
972-2225	Size #25
972-2230	Size #30
972-2235	Size #35
972-2240	Size #40
972-2245	Size #45
972-2250	Size #50
972-2255	Size #55
972-2260	Size #60
972-2270	Size #70
972-2280	Size #80
972-2201	Assorted Sizes #15 – #40
972-2202	Assorted Sizes #45 – #80
972-2203	Assorted Sizes #90 – #140

.04 Taper Points (box of 50)

972-2425	Size #25
972-2430	Size #30
972-2435	Size #35
972-2440	Size #40
972-2445	Size #45
972-2401	Assorted Sizes #15 – #40

.06 Taper Points (box of 50)

972-2620	Size #20
972-2625	Size #25
972-2630	Size #30
972-2635	Size #35
972-2640	Size #40
972-2645	Size #45
972-2601	Assorted Sizes #15 – #40

Autofit Backfill Points (box of 60)

972-2321	F (Fine)
972-2322	FM (Fine-Medium)
972-2323	M (Medium)
972-2324	ML (Medium-Large)

Real Safety
Real Strength
Real Proof

THE ENDODONTIC FILLING MATERIAL – WITH A BETTER SEAL



RealSeal™